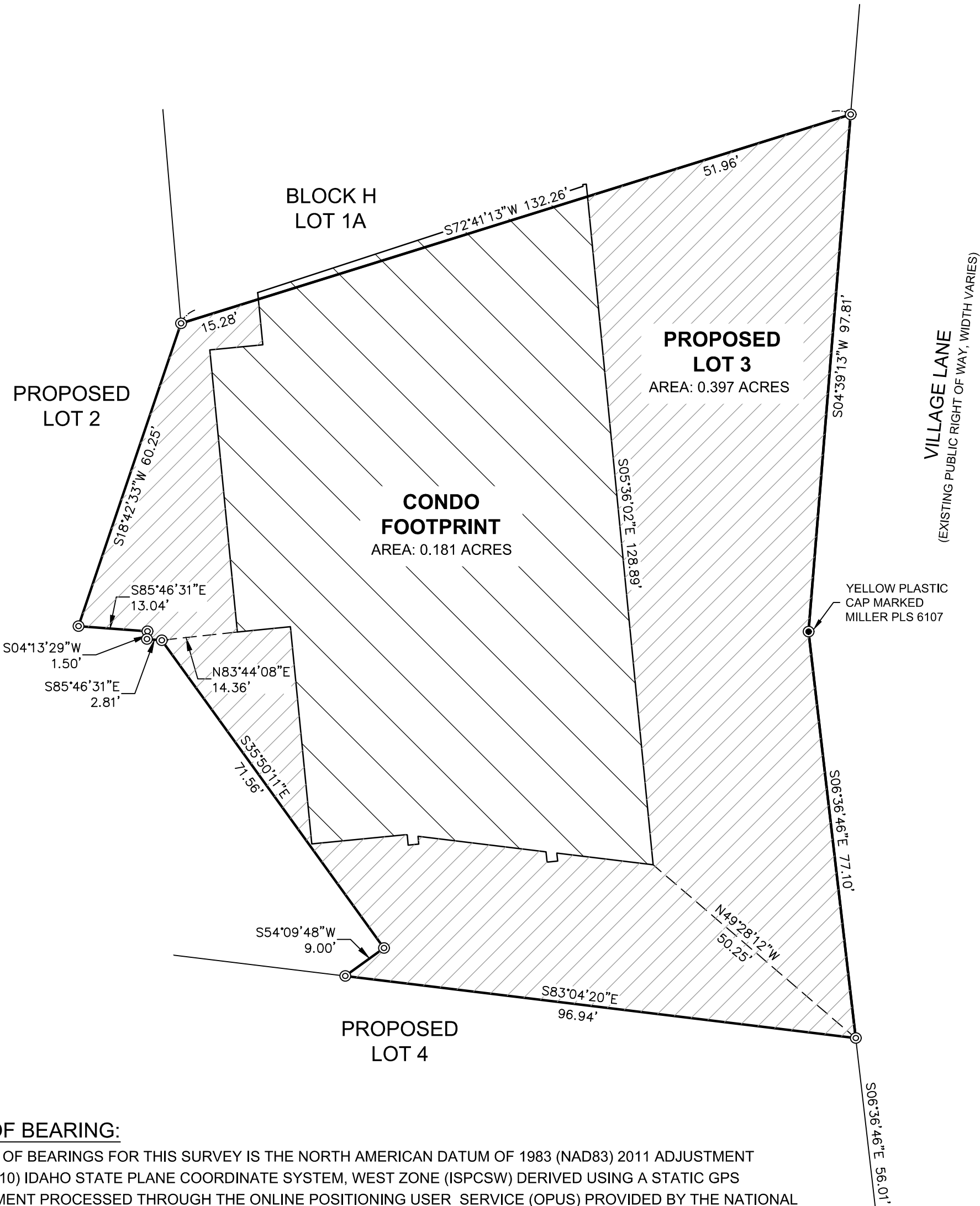
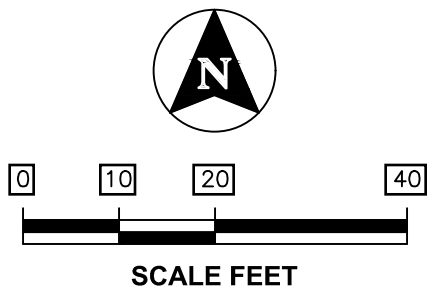


WHITE PINE LODGE PHASE 2

A PORTION OF LOT 1A, BLOCK I OF "THE REPLAT OF BLOCK H, LOT 1 OF THE REPLAT OF BLOCKS D & H OF SCHWEITZER MOUNTAIN COMMUNITY, AS RECORDED IN BOOK 5 OF PLATS, PAGE 184, AND A REPLAT OF BLOCK I OF SCHWEITZER MOUNTAIN COMMUNITY, AN EXPANDABLE PLANNED UNIT DEVELOPMENT, AS RECORDED IN BOOK 5 OF PLATS, PAGE 141, RECORDS OF BONNER COUNTY, IDAHO", AS RECORDED IN BOOK 6 OF PLATS, PAGE 154, RECORDS OF BONNER COUNTY, IDAHO



BASIS OF BEARING:

THE BASIS OF BEARINGS FOR THIS SURVEY IS THE NORTH AMERICAN DATUM OF 1983 (NAD83) 2011 ADJUSTMENT (EPOCH:2010) IDAHO STATE PLANE COORDINATE SYSTEM, WEST ZONE (ISPCSW) DERIVED USING A STATIC GPS MEASUREMENT PROCESSED THROUGH THE ONLINE POSITIONING USER SERVICE (OPUS) PROVIDED BY THE NATIONAL GEODETIC SURVEY (NGS) AND REAL TIME KINEMATIC (RTK) GPS MEASUREMENTS. ALL BEARINGS SHOWN ARE GRID USING A CONVERGENCE ANGLE OF (-)0°39'12" CALCULATED AT SCHWEITZER MOUNTAIN CONTROL POINT NUMBER 224, MONUMENTED WITH A 3/4 INCH DIAMETER REBAR AND A 3-1/4 INCH DIAMETER ALUMINUM CAP MARKED "CRYSTAL SPRINGS", GRID COORDINATES N: 2443352.14, E: 2412226.28. ALL DISTANCES SHOWN ARE GROUND DISTANCES. A COMBINED ADJUSTMENT FACTOR (CAF) OF 1.0002341848 (CALCULATED AT THE ABOVE GRID COORDINATES AND AT AN ELEVATION OF 4716') WAS USED TO CONVERT GRID COORDINATES TO GROUND COORDINATES AND APPLIED AT CONTROL POINT NUMBER 224. THE FOLLOWING NGS NETWORK STATIONS WERE USED IN PROCESSING THE GPS MEASUREMENTS:

PID	DESIGNATION	LATITUDE	LONGITUDE
DL7746	P422 FOOT_HILL_ID2007 CORS ARP	N46°47'52.298"	W116°58'46.803"
DG7408	P020 DRYLNDRSH_WA2004 CORS ARP	N47°00'07.933"	W118°33'56.712"
DL7722	MTFV FLAT HEAD COMMUNI CORS ARP	N48°13'38.890"	W114°19'36.542"

LEGEND

- FOUND A 5/8" DIAM. REBAR WITH NO CAP, UNLESS OTHERWISE NOTED.
- SET A 5/8" DIAM. REBAR, 24 INCHES LONG, WITH A PINK PLASTIC CAP MARKED PLS 19136.
- (R1) RECORD DATA.
- GENERAL COMMON AREA (GCA)
- RESIDENTIAL COMMON AREA (RCA)
- RESIDENTIAL UNIT
- LIMITED RESIDENTIAL COMMON AREA (LRCA)
- LIMITED COMMERCIAL COMMON AREA (LCCA)

SURVEYOR'S NARRATIVE AND NOTES:

- THIS PLAT IS SUBJECT TO THE CONDOMINIUM PROPERTY ACT TITLE 55: CHAPTER 15, IDAHO CODE.
- MASTER CCR'S FOR SCHWEITZER MOUNTAIN RESORT A PLANNED UNIT DEVELOPMENT ARE HEREBY MADE A PART OF THIS PLAT. RECORDED IN THE BONNER COUNTY RECORDS JUNE 18, 1990, INSTRUMENT NO. 376609 AND AMENDMENTS RECORDED AS INSTRUMENT NUMBERS 386851, 398174, 421116, 441475, 441476, 455947, 456492, 457971, 460423, 499045, 500230, 505730, 528177, 552736, 561696, AND 638878 RECORDS OF BONNER COUNTY, IDAHO. THE SCHWEITZER MOUNTAIN COMMUNITY ASSOCIATION IS THE ORGANIZATION ESTABLISHED PER THE CCR'S TO ADMINISTER THE DOCUMENT.
- THIS PLAT AND THE UNITS DEFINED HEREIN ARE SUBJECT TO "FINAL DECLARATION OF CONDOMINIUM OF WHITE PINE LODGE, A CONDOMINIUM PROJECT" RECORDED MAY 23, 2002 AS INSTRUMENT NO. 601774 IN THE OFFICE OF BONNER COUNTY RECORDER.
- THIS PLAT AND THE UNITS DEFINED HEREIN ARE SUBJECT TO "AMENDMENT TO FINAL DECLARATION OF CONDOMINIUM OF WHITE PINE LODGE, A CONDOMINIUM PROJECT" RECORDED \_\_\_\_\_ AS INSTRUMENT NO. \_\_\_\_\_ IN THE OFFICE OF BONNER COUNTY RECORDER.
- THE PHYSICAL BOUNDARIES OF THE UNITS DEPICTED HEREON ARE THE INTERIOR SURFACES OF THE PERIMETER WALLS, FLOORS, CEILINGS, WINDOWS, AND WINDOW FRAMES, DOORS, AND DOOR FRAMES AND TRIM. ALL OTHER PORTIONS OF THE WALLS, FLOORS, OR CEILINGS (INCLUDING WALLS COMMON TO SEPARATE UNITS) SHALL BE PART OF THE COMMON AREA.
- ALL UNIT LINES ARE PARALLEL OR PERPENDICULAR TO THE BUILDING ORIENTATION BEARING UNLESS OTHERWISE SHOWN.
- EXTENSION (TIE) LINE DIMENSIONS FOR SHEET 1 IS FROM PROJECT BOUNDARY CORNER TO EXTERIOR FACE OF BUILDING CORNER.
- ALL OUTDOOR AREAS BETWEEN THE BUILDING AND THE PROPOSED LOT LINES ARE GENERAL COMMON AREA (GCA).

REFERENCE DOCUMENTS:

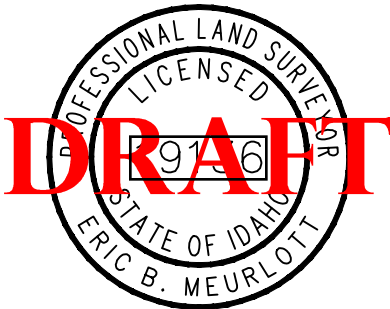
P1) PLAT OF SCHWEITZER MOUNTAIN COMMUNITY, AN EXPANDABLE PLANNED UNIT DEVELOPMENT, BLOCKS D, H, J, K, AND L BY PLS 6107 RECORDED IN BOOK 5 OF PLATS, PAGE 21, ON MAY 13, 1994 RECORDS OF BONNER COUNTY, IDAHO.

P2) PLAT OF SCHWEITZER MOUNTAIN COMMUNITY, AN EXPANDABLE PLANNED UNIT DEVELOPMENT, BLOCKS B, C1, C2, F, G3, I, AND L7 BY PLS 6107 RECORDED IN BOOK 5 OF PLATS, PAGE 141, ON JANUARY 3, 1997 RECORDS OF BONNER COUNTY, IDAHO.

P3) REPLAT OF BLOCKS D AND H OF SCHWEITZER COMMUNITY, AN EXPANDABLE PLANNED UNIT DEVELOPMENT BLOCKS D, H, J, K, AND L BY PLS 6107 RECORDED IN BOOK 5 OF PLATS, PAGE 184, ON OCTOBER 31, 1997 RECORDS OF BONNER COUNTY, IDAHO.

P4) A REPLAT OF BLOCK H, LOT 1 OF THE REPLAT OF BLOCKS D AND H OF SCHWEITZER MOUNTAIN COMMUNITY, AN EXPANDABLE PLANNED UNIT DEVELOPMENT, AS RECORDED IN BOOK 5 OF PLATS, PAGE 184, AND A REPLAT OF BLOCK I OF SCHWEITZER MOUNTAIN COMMUNITY, AN EXPANDABLE PLANNED UNIT DEVELOPMENT, AS RECORDED IN BOOK 5 OF PLATS, PAGE 141, RECORDS OF BONNER COUNTY, IDAHO BY PLS 6107 RECORDED IN BOOK 6 OF PLATS, PAGE 154, ON OCTOBER 16, 2001 RECORDS OF BONNER COUNTY, IDAHO.

R1) RECORD OF SURVEY FOR WHITE PINE LODGE, BLOCK H, LOT 1 OF THE REPLAT OF BLOCKS D AND H OF SCHWEITZER MOUNTAIN COMMUNITY, AN EXPANDABLE PLANNED UNIT DEVELOPMENT BLOCKS D, H, J, K, AND L, AS RECORDED IN BOOK 5 OF PLATS, PAGE 184, RECORDS OF BONNER COUNTY, IDAHO BY PLS 6107 RECORDED AS INSTRUMENT NUMBER 586520 ON AUGUST 21, 2001 RECORDS OF BONNER COUNTY, IDAHO.



BOOK, PAGE \_\_\_\_\_

INST. No. \_\_\_\_\_

STATE OF IDAHO  
COUNTY OF BONNER

AT THE REQUEST OF:  
T-O ENGINEERS

AT \_\_\_\_\_ MINUTES PAST \_\_\_\_\_ O'CLOCK \_\_\_\_ M

DATE: \_\_\_\_\_

MICHAEL W. ROSEDALE, CLERK

BY \_\_\_\_\_ DEPUTY

FEE \$

J:\\_SCHWEITZER MOUNTAIN\3\_ACADDWG\20\_5\_NEEDLES AT WHITE  
PINE\210383\_V\_WHITE PINES CONDO PLAT\_BLA.DWG



T-O ENGINEERS

7950 MEADOWLARK WAY, STE. A  
COEUR d'ALENE, IDAHO 83815-7710  
PHONE: (208) 762-3644 WWW.TO-ENGINEERS.COM

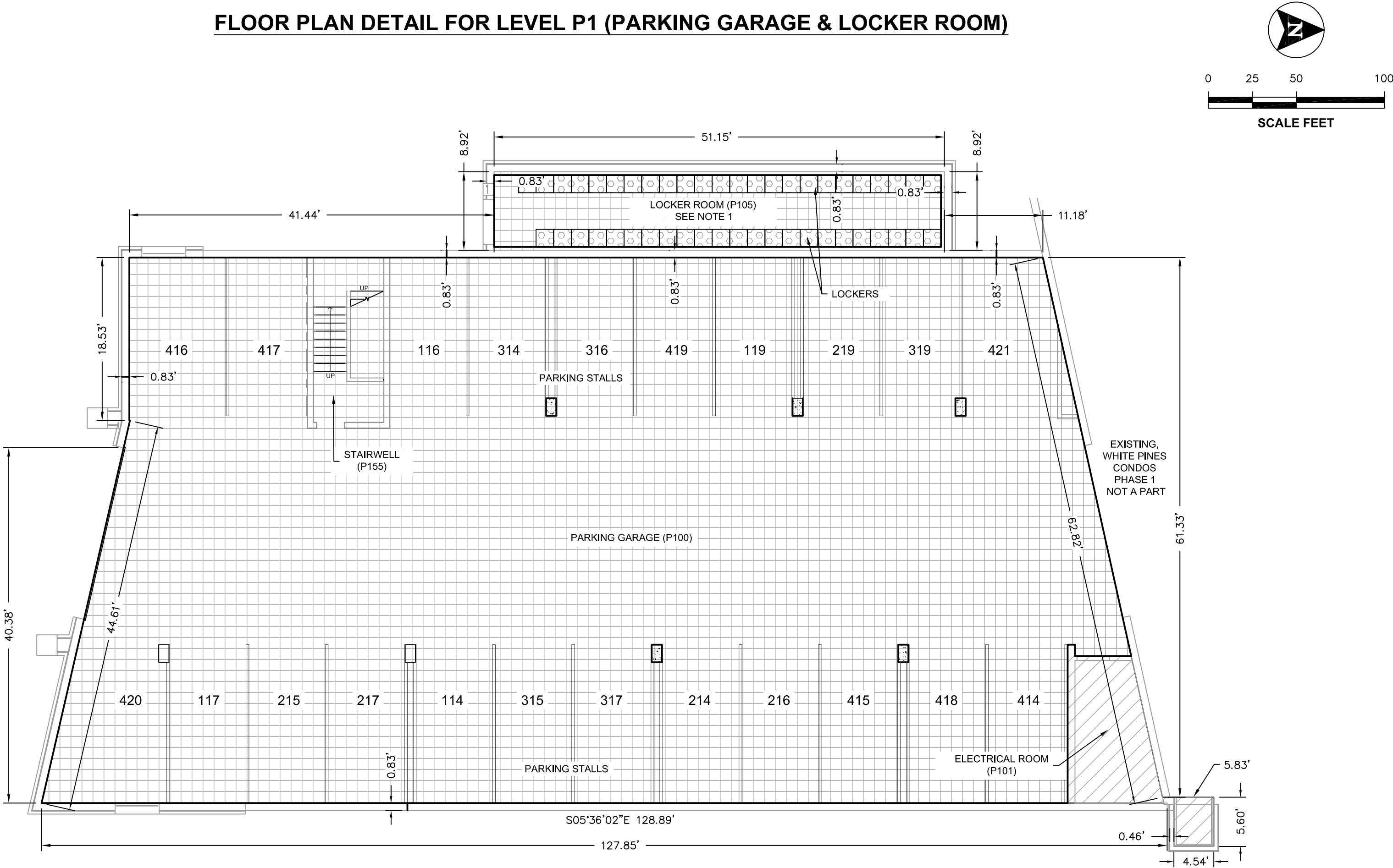
SHEET NO. 1 OF 10

WHITE PINE LODGE PHASE 2

A PORTION OF LOT 1A, BLOCK I OF "THE REPLAT OF BLOCK H, LOT 1 OF THE REPLAT OF BLOCKS D & H OF SCHWEITZER MOUNTAIN COMMUNITY, AS RECORDED IN BOOK 5 OF PLATS, PAGE 184, AND A REPLAT OF BLOCK I OF SCHWEITZER MOUNTAIN COMMUNITY, AN EXPANDABLE PLANNED UNIT DEVELOPMENT, AS RECORDED IN BOOK 5 OF PLATS, PAGE 141, RECORDS OF BONNER COUNTY, IDAHO", AS RECORDED IN BOOK 6 OF PLATS, PAGE 154, RECORDS OF BONNER COUNTY, IDAHO

BOOK, PAGE \_\_\_\_\_  
INST. No. \_\_\_\_\_

FLOOR PLAN DETAIL FOR LEVEL P1 (PARKING GARAGE & LOCKER ROOM)

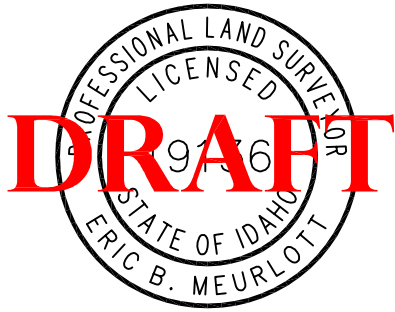


NOTES:

- 1) THE ENTIRE LOCKER ROOM IS RESIDENTIAL COMMON AREA. INDIVIDUAL LOCKERS ARE LIMITED RESIDENTIAL COMMON AREA.
- 2) INDIVIDUAL PARKING STALLS ARE RESERVED FOR EACH UNIT AS SHOWN HEREON. PARKING FOR UNITS 115, 118, 218, AND 318 WILL BE PROVIDED IN WHITE PINE LODGE EXISTING P1 LEVEL PARKING.

LEGEND

	GENERAL COMMON AREA (GCA)
	RESIDENTIAL COMMON AREA (RCA)
	RESIDENTIAL UNIT
	LIMITED RESIDENTIAL COMMON AREA (LRCA)
	LIMITED COMMERCIAL COMMON AREA (LCCA)



J:\\_SCHWEITZER MOUNTAIN\3\_ACADDWG\20\_5\_NEEDLES AT WHITE PINE\210383\_V\_WHITE PINES CONDO PLAT DETAILS.DWG

T-O ENGINEERS

7950 MEADOWLARK WAY, STE. A  
COEUR d'ALENE, IDAHO 83815-7710  
PHONE: (208) 762-3644 WWW.T-O-ENGINEERS.COM

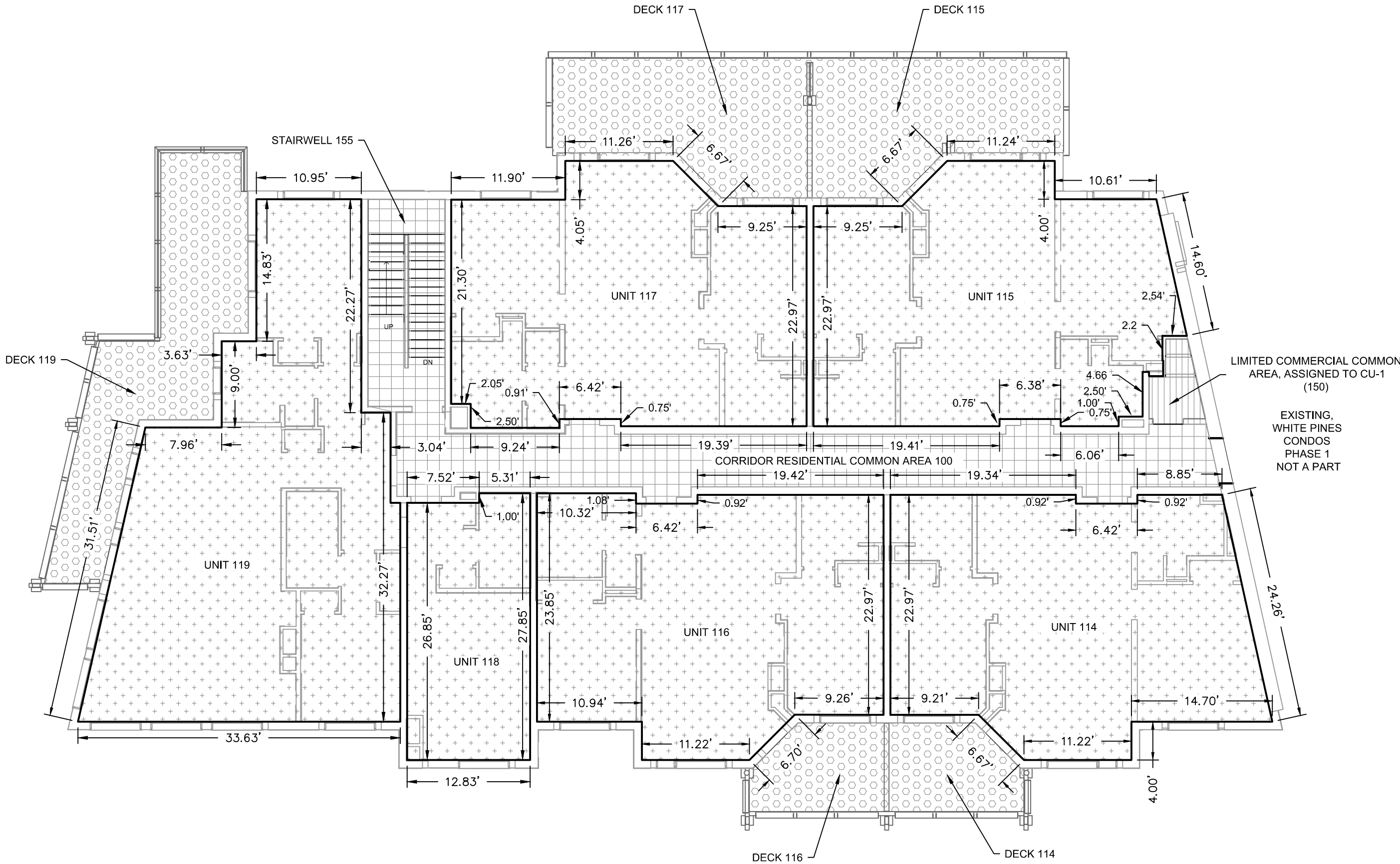
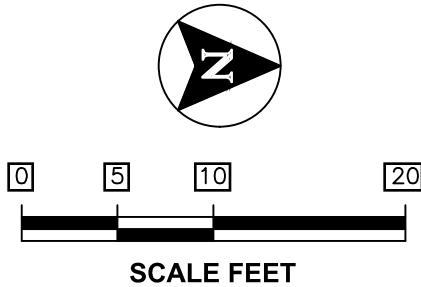
WHITE PINE LODGE PHASE 2

A PORTION OF LOT 1A, BLOCK I OF "THE REPLAT OF BLOCK H, LOT 1 OF THE REPLAT OF BLOCKS D & H OF SCHWEITZER MOUNTAIN COMMUNITY, AS RECORDED IN BOOK 5 OF PLATS, PAGE 184, AND A REPLAT OF BLOCK I OF SCHWEITZER MOUNTAIN COMMUNITY, AN EXPANDABLE PLANNED UNIT DEVELOPMENT, AS RECORDED IN BOOK 5 OF PLATS, PAGE 141, RECORDS OF BONNER COUNTY, IDAHO", AS RECORDED IN BOOK 6 OF PLATS, PAGE 154, RECORDS OF BONNER COUNTY, IDAHO

BOOK, PAGE \_\_\_\_\_

INST. No. \_\_\_\_\_

FLOOR PLAN DETAIL FOR LEVEL 1

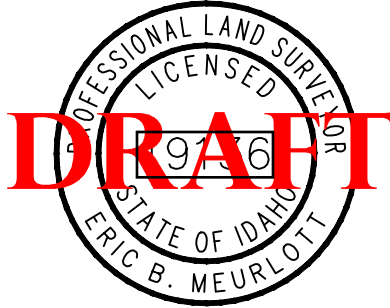


NOTES:

- 1. THIS DETAIL REPRESENTS THE FLOOR PLAN FOR THE UNITS ON LEVEL 1.
- \* LEVEL 1 INCLUDES RESIDENTIAL UNITS 114 THROUGH 119, RESIDENTIAL COMMON AREAS 100 AND 155, AND LIMITED COMMERCIAL COMMON AREA 150.

LEGEND

	GENERAL COMMON AREA (GCA)
	RESIDENTIAL COMMON AREA (RCA)
	RESIDENTIAL UNIT
	LIMITED RESIDENTIAL COMMON AREA (LRCA)
	LIMITED COMMERCIAL COMMON AREA (LCCA)



J:\\_SCHWEITZER MOUNTAIN\3\_ACADDWG\20\_5\_NEEDLES AT WHITE PINE\210383\_V\_WHITE PINES CONDO PLAT DETAILS.DWG

T-O ENGINEERS

7950 MEADOWLARK WAY, STE. A  
COEUR d'ALENE, IDAHO 83815-7710  
PHONE: (208) 762-3644    WWW.TO-ENGINEERS.COM

SHEET NO. 3 OF 10

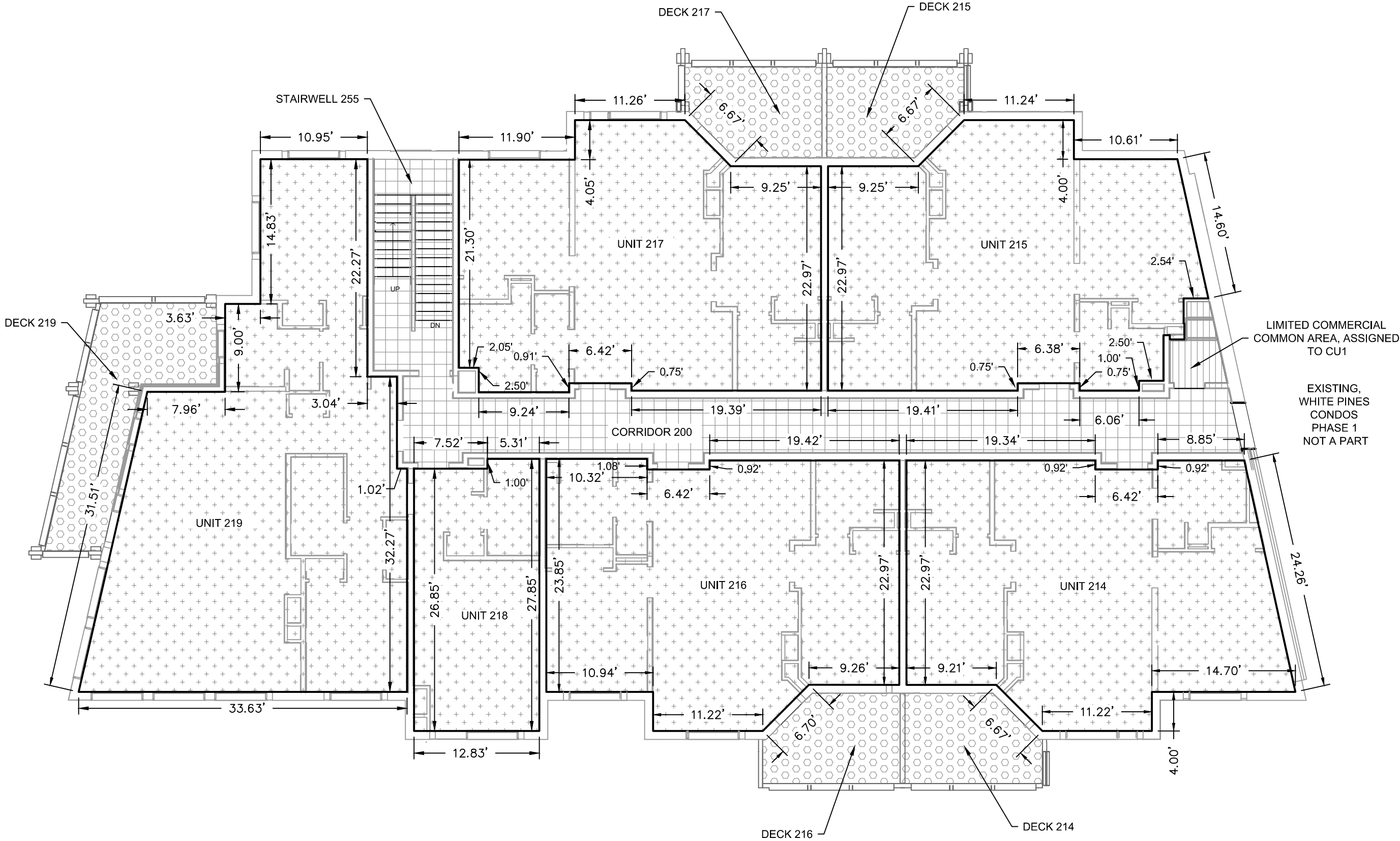
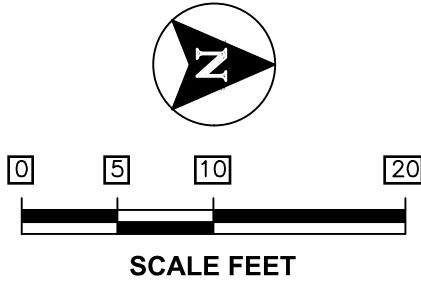


WHITE PINE LODGE PHASE 2

A PORTION OF LOT 1A, BLOCK I OF "THE REPLAT OF BLOCK H, LOT 1 OF THE REPLAT OF BLOCKS D & H OF SCHWEITZER MOUNTAIN COMMUNITY, AS RECORDED IN BOOK 5 OF PLATS, PAGE 184, AND A REPLAT OF BLOCK I OF SCHWEITZER MOUNTAIN COMMUNITY, AN EXPANDABLE PLANNED UNIT DEVELOPMENT, AS RECORDED IN BOOK 5 OF PLATS, PAGE 141, RECORDS OF BONNER COUNTY, IDAHO", AS RECORDED IN BOOK 6 OF PLATS, PAGE 154, RECORDS OF BONNER COUNTY, IDAHO

BOOK, PAGE \_\_\_\_\_  
INST. No. \_\_\_\_\_

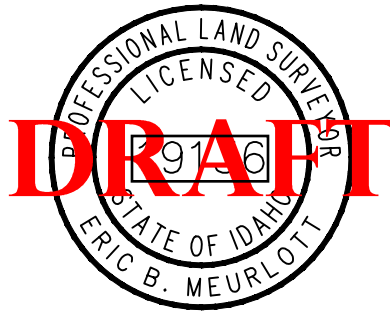
FLOOR PLAN DETAIL FOR LEVEL 2



NOTES:

- 1. THIS DETAIL REPRESENTS THE FLOOR PLAN FOR THE UNITS ON LEVEL 2.
- \* LEVEL 2 INCLUDES RESIDENTIAL UNITS 214 THROUGH 219, RESIDENTIAL COMMON AREAS 200 AND 255, AND LIMITED COMMERCIAL COMMON AREA 250.

LEGEND	
	GENERAL COMMON AREA (GCA)
	RESIDENTIAL COMMON AREA (RCA)
	RESIDENTIAL UNIT
	LIMITED RESIDENTIAL COMMON AREA (LRCA)
	LIMITED COMMERCIAL COMMON AREA (LCCA)



J:\\_SCHWEITZER MOUNTAIN\3\_ACADDWG\20\_5\_NEEDLES AT WHITE PINE\210383\_V\_WHITE PINES CONDO PLAT DETAILS.DWG

**T-O ENGINEERS**  
7950 MEADOWLARK WAY, STE. A  
COEUR d'ALENE, IDAHO 83815-7710  
PHONE: (208) 762-3644    WWW.TO-ENGINEERS.COM

SHEET NO. 4 OF 10

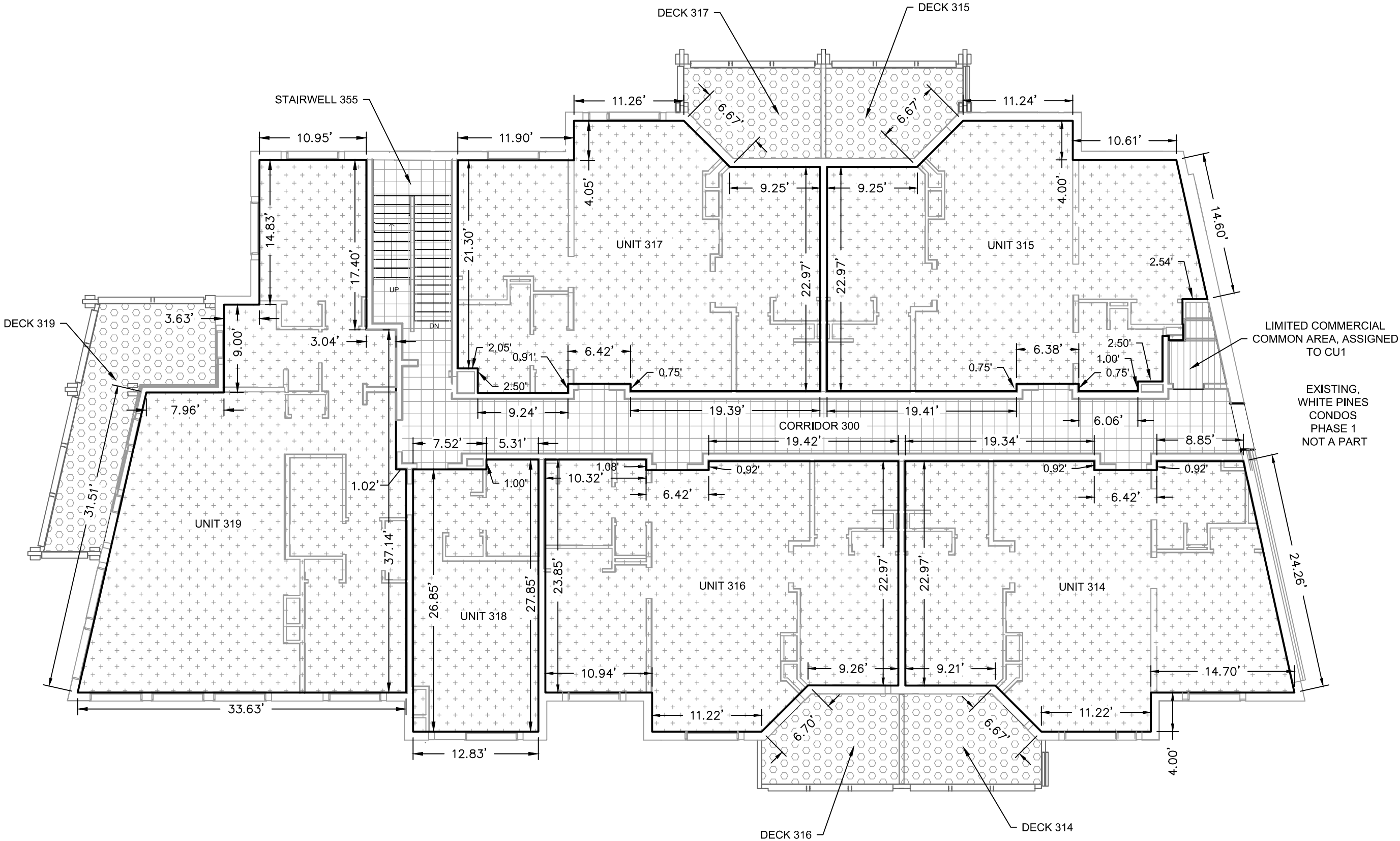
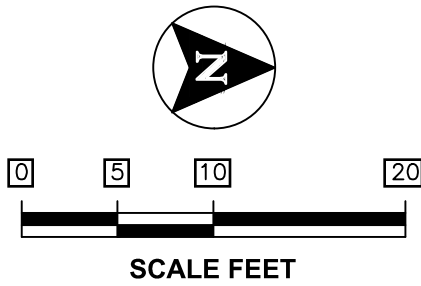


WHITE PINE LODGE PHASE 2

A PORTION OF LOT 1A, BLOCK I OF "THE REPLAT OF BLOCK H, LOT 1 OF THE REPLAT OF BLOCKS D & H OF SCHWEITZER MOUNTAIN COMMUNITY, AS RECORDED IN BOOK 5 OF PLATS, PAGE 184, AND A REPLAT OF BLOCK I OF SCHWEITZER MOUNTAIN COMMUNITY, AN EXPANDABLE PLANNED UNIT DEVELOPMENT, AS RECORDED IN BOOK 5 OF PLATS, PAGE 141, RECORDS OF BONNER COUNTY, IDAHO", AS RECORDED IN BOOK 6 OF PLATS, PAGE 154, RECORDS OF BONNER COUNTY, IDAHO

BOOK, PAGE \_\_\_\_\_  
INST. No. \_\_\_\_\_

FLOOR PLAN DETAIL FOR LEVEL 3



NOTES:

- 1. THIS DETAIL REPRESENTS THE FLOOR PLAN FOR THE UNITS ON LEVEL 3.
- \* LEVEL 3 INCLUDES RESIDENTIAL UNITS 314 THROUGH 319, RESIDENTIAL COMMON AREAS 300 AND 355, AND LIMITED COMMERCIAL COMMON AREA 350.

LEGEND

	GENERAL COMMON AREA (GCA)
	RESIDENTIAL COMMON AREA (RCA)
	RESIDENTIAL UNIT
	LIMITED RESIDENTIAL COMMON AREA (LRCA)
	LIMITED COMMERCIAL COMMON AREA (LCCA)



J:\\_SCHWEITZER MOUNTAIN\3\_ACADDWG\20\_5\_NEEDLES AT WHITE PINE\210383\_V\_WHITE PINES CONDO PLAT DETAILS.DWG

T-O ENGINEERS

7950 MEADOWLARK WAY, STE. A  
COEUR d'ALENE, IDAHO 83815-7710  
PHONE: (208) 762-3644    WWW.TO-ENGINEERS.COM

SHEET NO. 5 OF 10

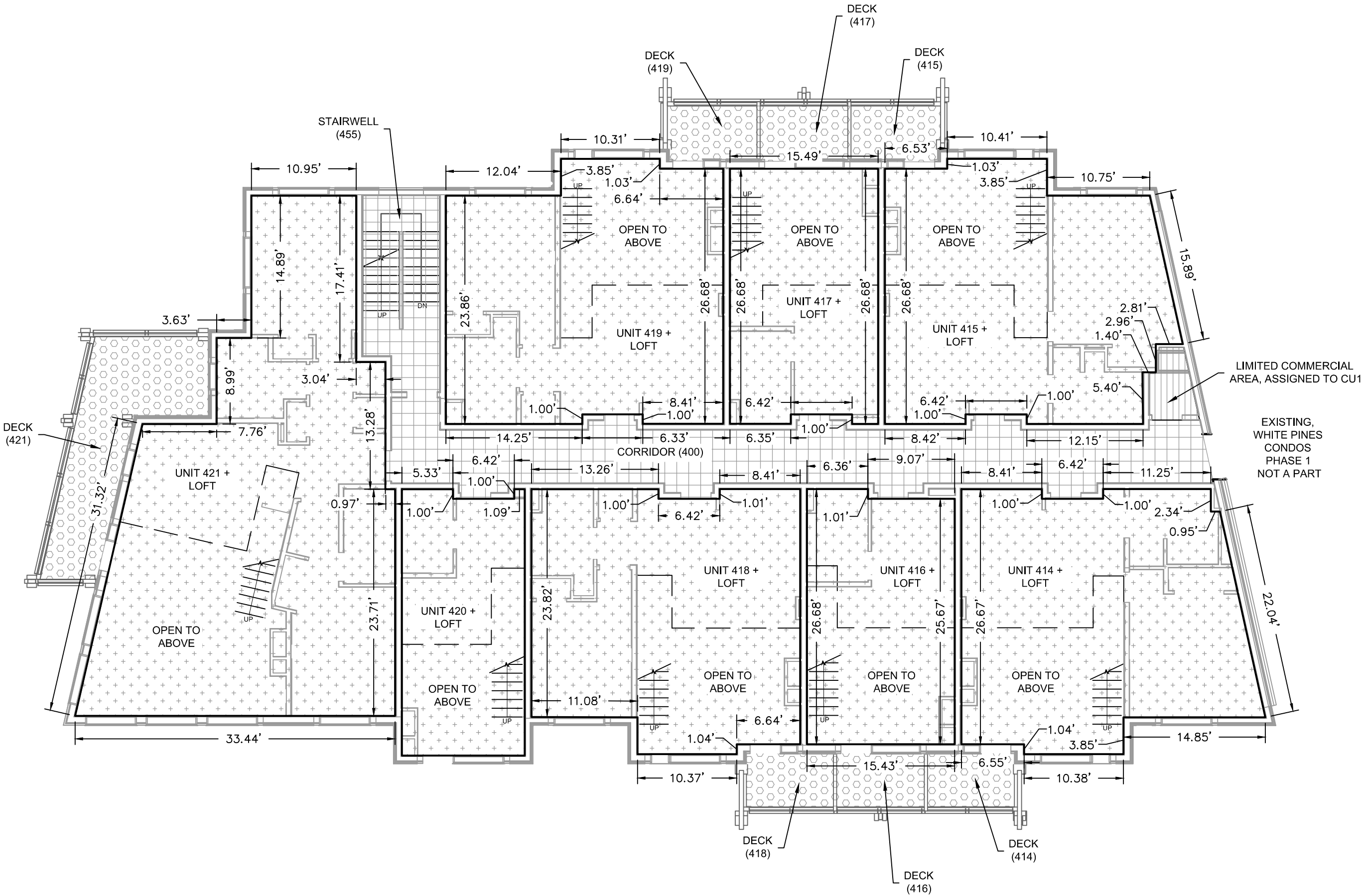
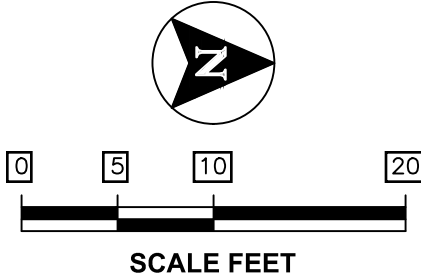
WHITE PINE LODGE PHASE 2

A PORTION OF LOT 1A, BLOCK I OF "THE REPLAT OF BLOCK H, LOT 1 OF THE REPLAT OF BLOCKS D & H OF SCHWEITZER MOUNTAIN COMMUNITY, AS RECORDED IN BOOK 5 OF PLATS, PAGE 184, AND A REPLAT OF BLOCK I OF SCHWEITZER MOUNTAIN COMMUNITY, AN EXPANDABLE PLANNED UNIT DEVELOPMENT, AS RECORDED IN BOOK 5 OF PLATS, PAGE 141, RECORDS OF BONNER COUNTY, IDAHO", AS RECORDED IN BOOK 6 OF PLATS, PAGE 154, RECORDS OF BONNER COUNTY, IDAHO

BOOK, PAGE \_\_\_\_\_

INST. No. \_\_\_\_\_

FLOOR PLAN DETAIL FOR LEVEL 4

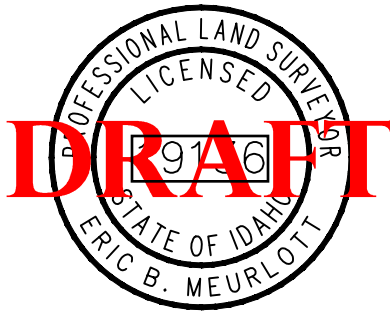


NOTES:

- 1. THIS DETAIL REPRESENTS THE FLOOR PLAN FOR THE UNITS ON LEVEL 4.
- \* LEVEL 4 INCLUDES RESIDENTIAL UNITS 414 THROUGH 421, RESIDENTIAL COMMON AREAS 400 AND 455, AND LIMITED COMMERCIAL COMMON AREA 450.
- \* THE UNITS ON LEVEL 4 ALSO HAVE A LOFT ATTACHED WHICH IS SHOWN AND INCLUDED IN WITHIN THE LEVEL 5 DETAIL, SEE SHEET 7 FOR LOFT DETAILS.

LEGEND

- GENERAL COMMON AREA (GCA)
- RESIDENTIAL COMMON AREA (RCA)
- RESIDENTIAL UNIT
- LIMITED RESIDENTIAL COMMON AREA (LRCA)
- LIMITED COMMERCIAL COMMON AREA (LCCA)



J:\\_SCHWEITZER MOUNTAIN\3\_ACADDWG\20\_5\_NEEDLES AT WHITE PINE\210383\_V\_WHITE PINES CONDO PLAT DETAILS.DWG

**T-O ENGINEERS**  
7950 MEADOWLARK WAY, STE. A  
COEUR d'ALENE, IDAHO 83815-7710  
PHONE: (208) 762-3644 WWW.TO-ENGINEERS.COM

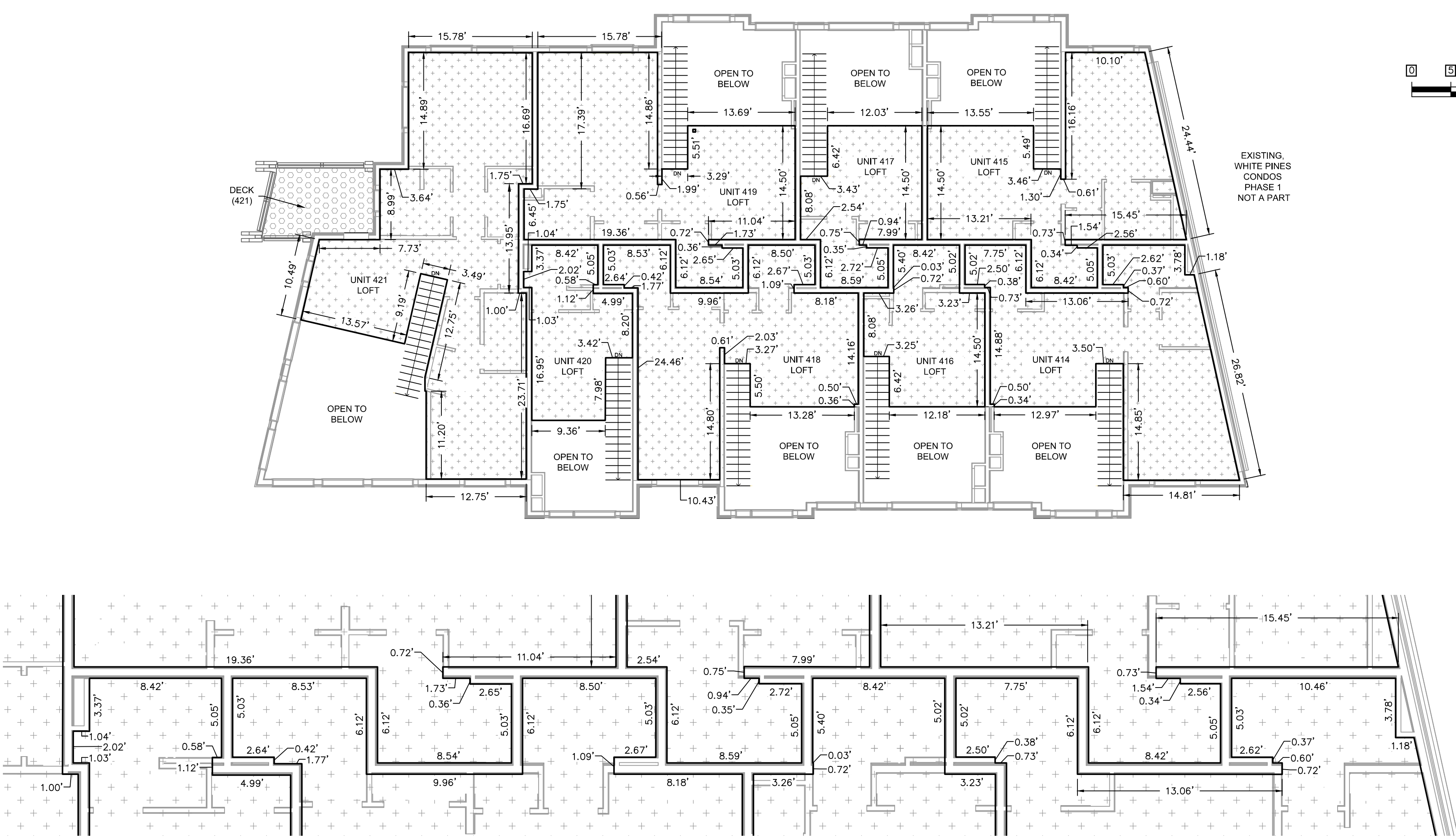
WHITE PINE LODGE PHASE 2

A PORTION OF LOT 1A, BLOCK I OF "THE REPLAT OF BLOCK H, LOT 1 OF THE REPLAT OF BLOCKS D & H OF SCHWEITZER MOUNTAIN COMMUNITY, AS RECORDED IN BOOK 5 OF PLATS, PAGE 184, AND A REPLAT OF BLOCK I OF SCHWEITZER MOUNTAIN COMMUNITY, AN EXPANDABLE PLANNED UNIT DEVELOPMENT, AS RECORDED IN BOOK 5 OF PLATS, PAGE 141, RECORDS OF BONNER COUNTY, IDAHO", AS RECORDED IN BOOK 6 OF PLATS, PAGE 154, RECORDS OF BONNER COUNTY, IDAHO

BOOK, PAGE \_\_\_\_\_

INST. No. \_\_\_\_\_

FLOOR PLAN DETAIL FOR LEVEL 5



AREA DETAIL

NOTES:

- 1. THIS DETAIL REPRESENTS THE FLOOR PLAN FOR LEVEL 5.
- \* LEVEL 5 CONTAINS THE LOFTS FOR RESIDENTIAL UNITS 414 THROUGH 421.
- \* THERE ARE NO COMMON AREAS ON LEVEL 5.

LEGEND

	GENERAL COMMON AREA (GCA)
	RESIDENTIAL COMMON AREA (RCA)
	RESIDENTIAL UNIT
	LIMITED RESIDENTIAL COMMON AREA (LRCA)
	LIMITED COMMERCIAL COMMON AREA (LCCA)



J:\\_SCHWEITZER MOUNTAIN\3\_ACADDWG\20\_5\_NEEDLES AT WHITE PINE\210383\_V\_WHITE PINES CONDO PLAT DETAILS.DWG

**T-O ENGINEERS**

7950 MEADOWLARK WAY, STE. A  
COEUR d'ALENE, IDAHO 83815-7710  
PHONE: (208) 762-3644 WWW.TO-ENGINEERS.COM

SHEET NO. 7 OF 10

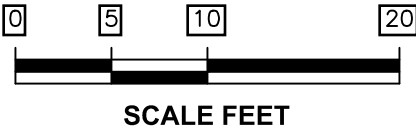


WHITE PINE LODGE PHASE 2

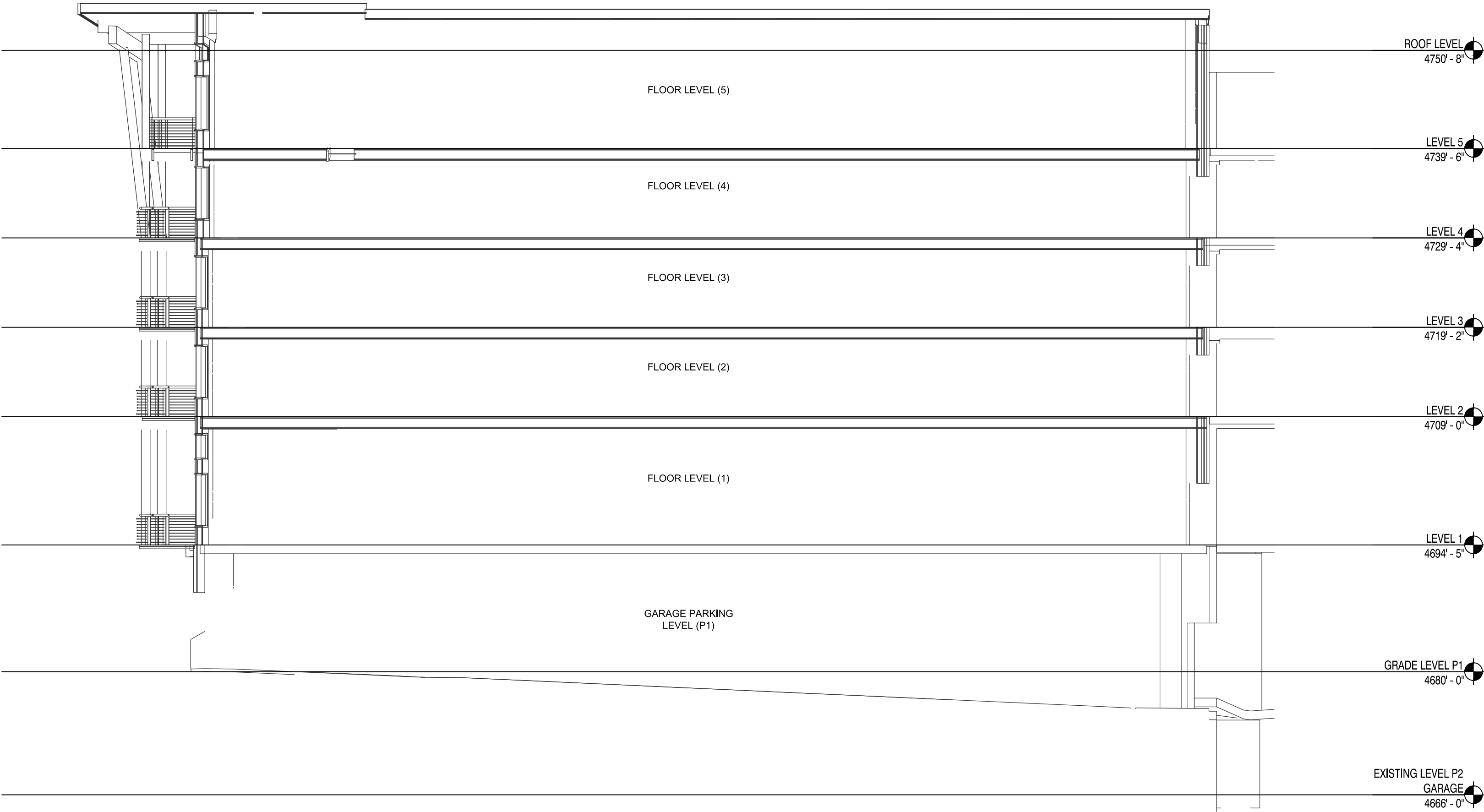
A PORTION OF LOT 1A, BLOCK I OF "THE REPLAT OF BLOCK H, LOT 1 OF THE REPLAT OF BLOCKS D & H OF SCHWEITZER MOUNTAIN COMMUNITY, AS RECORDED IN BOOK 5 OF PLATS, PAGE 184, AND A REPLAT OF BLOCK I OF SCHWEITZER MOUNTAIN COMMUNITY, AN EXPANDABLE PLANNED UNIT DEVELOPMENT, AS RECORDED IN BOOK 5 OF PLATS, PAGE 141, RECORDS OF BONNER COUNTY, IDAHO", AS RECORDED IN BOOK 6 OF PLATS, PAGE 154, RECORDS OF BONNER COUNTY, IDAHO

BOOK, PAGE \_\_\_\_\_

INST. No. \_\_\_\_\_



EAST ELEVATION DETAIL



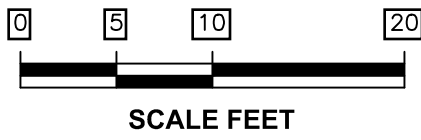
J:\\_SCHWEITZER MOUNTAIN\3\_ACADDWG\20\_5\_NEEDLES AT WHITE PINE\210383\_V\_WHITE PINES CONDO PLAT DETAILS.DWG

**T-O ENGINEERS**  
7950 MEADOWLARK WAY, STE. A  
COEUR d'ALENE, IDAHO 83815-7710  
PHONE: (208) 762-3644 WWW.TO-ENGINEERS.COM

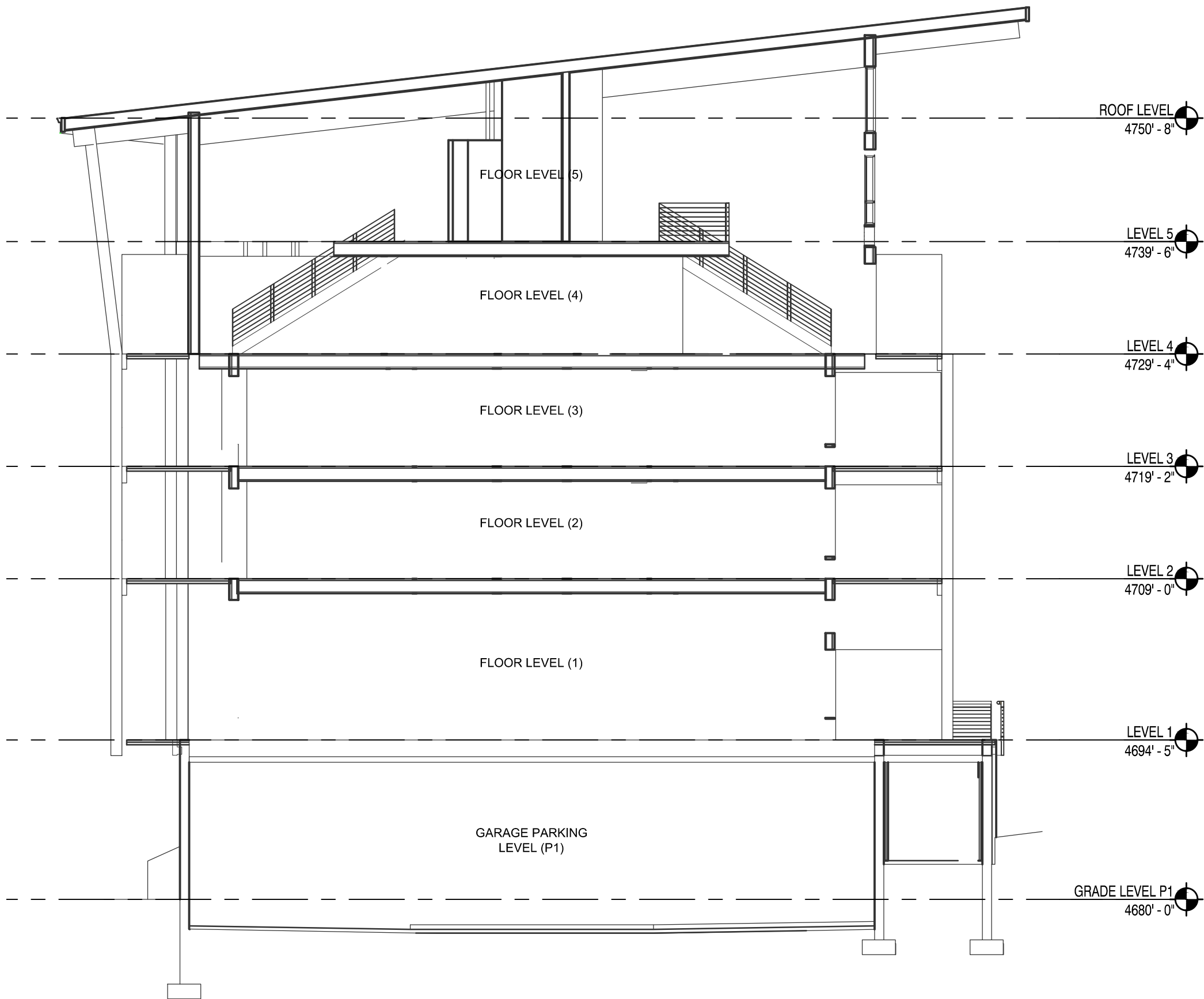
WHITE PINE LODGE PHASE 2

A PORTION OF LOT 1A, BLOCK I OF "THE REPLAT OF BLOCK H, LOT 1 OF THE REPLAT OF BLOCKS D & H OF SCHWEITZER MOUNTAIN COMMUNITY, AS RECORDED IN BOOK 5 OF PLATS, PAGE 184, AND A REPLAT OF BLOCK I OF SCHWEITZER MOUNTAIN COMMUNITY, AN EXPANDABLE PLANNED UNIT DEVELOPMENT, AS RECORDED IN BOOK 5 OF PLATS, PAGE 141, RECORDS OF BONNER COUNTY, IDAHO", AS RECORDED IN BOOK 6 OF PLATS, PAGE 154, RECORDS OF BONNER COUNTY, IDAHO

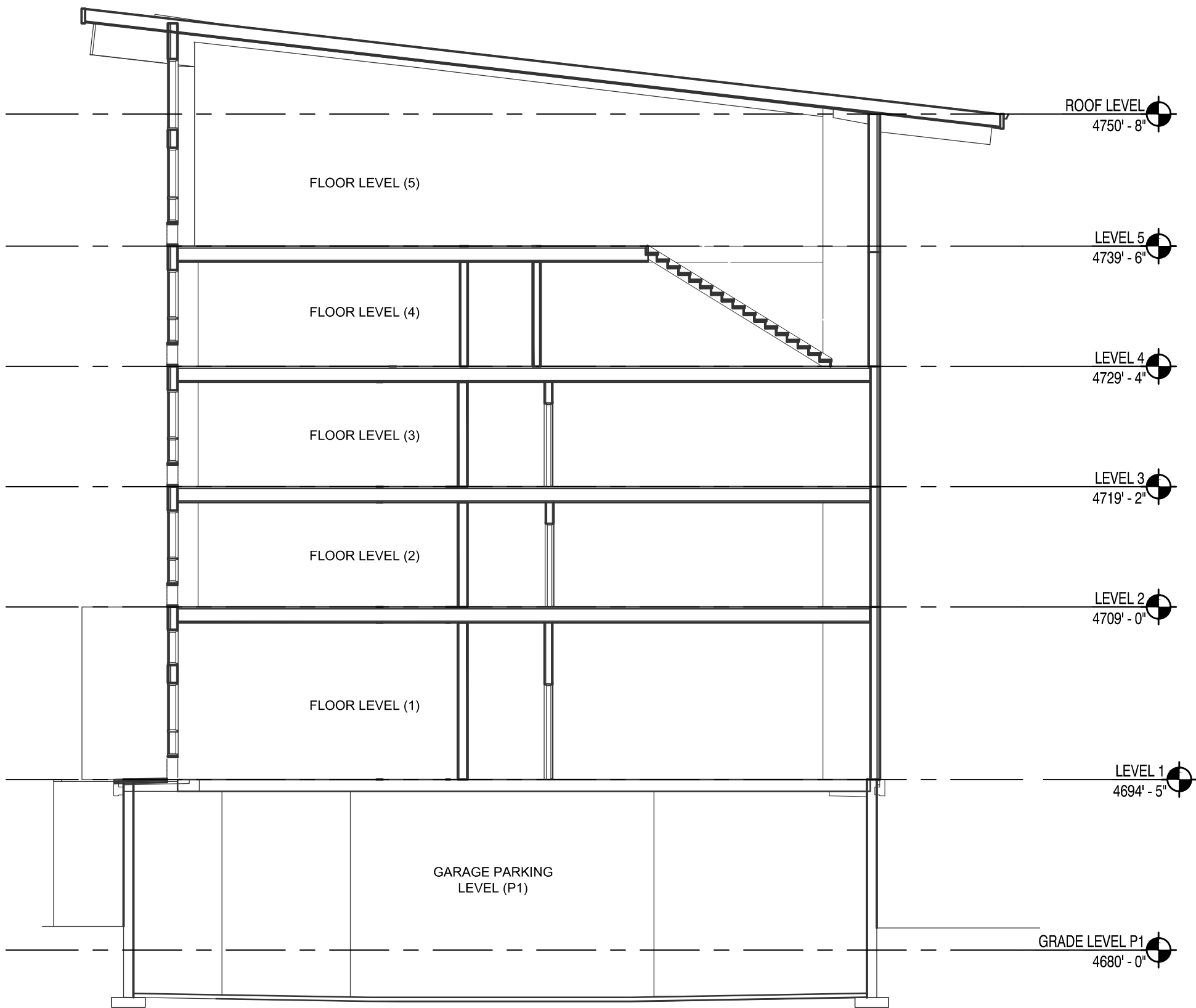
BOOK, PAGE \_\_\_\_\_  
INST. No. \_\_\_\_\_



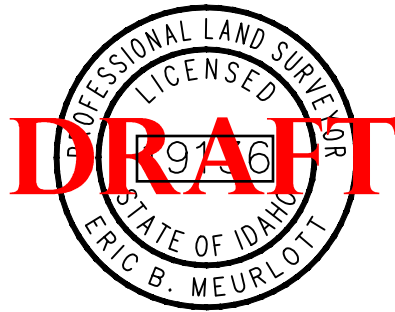
ELEVATION DETAIL



SOUTH ELEVATION



NORTH ELEVATION



J:\\_SCHWEITZER MOUNTAIN\3\_ACADDWG\20\_5\_NEEDLES AT WHITE PINE\210383\_V\_WHITE PINES CONDO PLAT DETAILS.DWG

**T-O ENGINEERS**  
7950 MEADOWLARK WAY, STE. A  
COEUR d'ALENE, IDAHO 83815-7710  
PHONE: (208) 762-3644 WWW.TO-ENGINEERS.COM